

# Bath

(Prior Park)  
Centre Guide



**elac**   
study vacations

# Contents

Bath	3
Prior Park College	4
Residential Accommodation	5
Homestay Accommodation	6
Meals	7
Medical & Safety Information	8
What to bring	9
General Information	10-14
Useful Information/Contact	15

Accredited by the  
 **BRITISH  
COUNCIL**  
for the teaching  
of English in the UK



# Bath

The city of Bath is a World Heritage Site, famous for its Roman Baths, Georgian architecture, thriving shopping and excellent leisure facilities. Its iconic features, such as Bath Abbey, Royal Crescent and Assembly Rooms have been attracting tourists for hundreds of years and is still a popular place to visit. It has also been the backdrop to famous TV series and movies such as Bridgerton, Charlie and the Chocolate Factory and Sherlock Holmes.

Some of what Bath has to offer:

- Historic buildings from Roman, medieval and Georgian times using Bath stone
- Independent shops and major brand stores
- First class sports and leisure facilities, including cinemas, leisure centre, bowling, trampolining, theatres, and a roller disco
- River and canal walks, green spaces and parks to explore
- Half-hourly direct train service to central London (90 minutes)
- Great places of interest nearby: Bristol, Oxford, Stonehenge and Glastonbury
- Beautiful surrounding countryside



# Prior Park College

Our courses take place at Prior Park College, an impressive English boarding school, set in 57 acres of parkland with amazing views over Bath.

## Location

The campus is situated in a peaceful location on a hill overlooking the city, fifteen minutes by bus from the centre. Elac organises a shuttle bus during the summer for students staying in homestay.

## Facilities

### SPORTS

Playing Field  
Astroturf Pitches  
Tennis Courts  
Sports Hall  
Indoor Swimming Pool

### EDUCATIONAL FACILITIES

Modern Classrooms  
Drama Studio  
Assembly Hall

### OTHER

Traditional Dining Hall

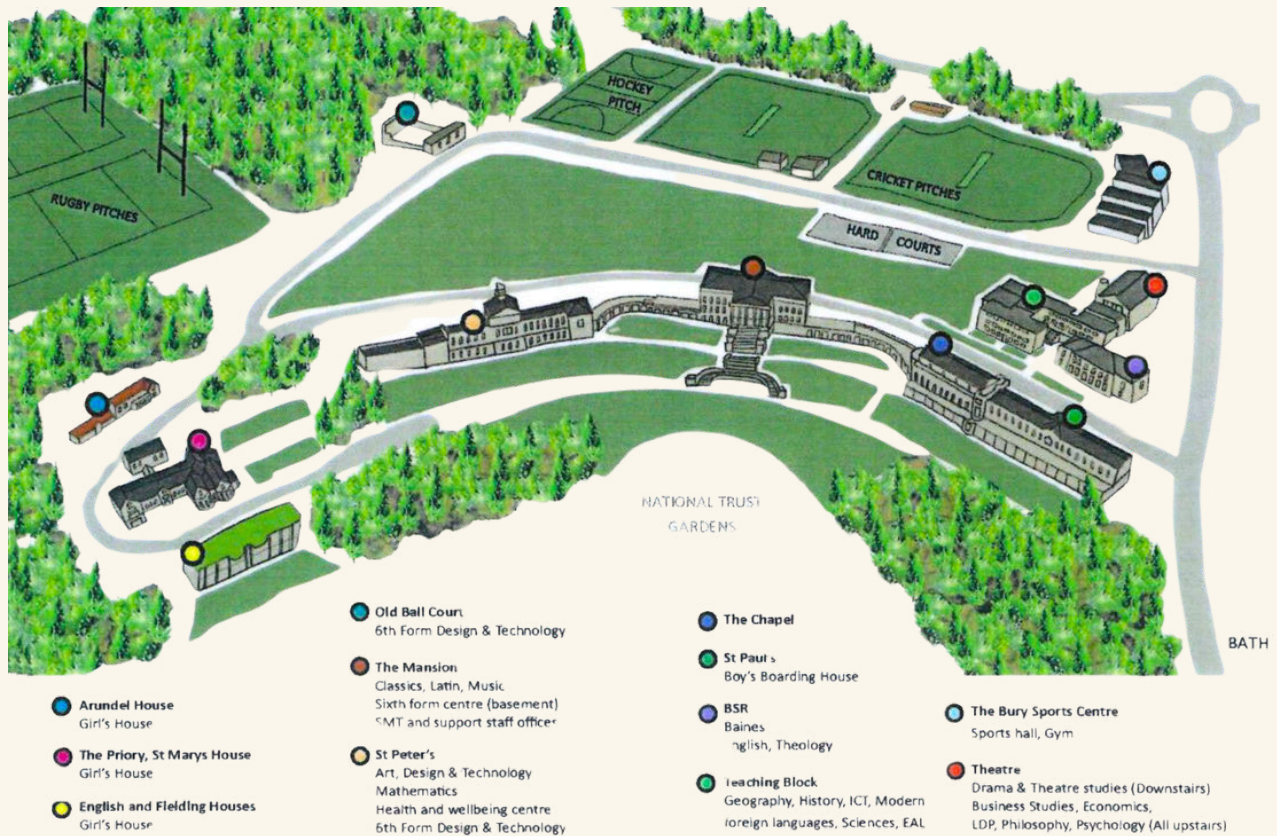


# Residential Accommodation

Accommodation is in two main buildings, in shared or single rooms. Most have shared bathroom facilities. There is an area where students can gather to socialise in the evenings. Both buildings are on site, within a few minutes' walk from all facilities. Rooms are cleaned regularly and fresh linen is provided weekly.



# School Map



# Homestay Accommodation

Elac hosts are selected by our Homestay Manager, who visits hosts every two years to inspect the accommodation provided.

Our hosts provide a warm welcoming atmosphere for our students where they can really feel at home. Homestay providers also have to comply with British Council standards, and have a current DBS Certificate (Disclosure and Barring Service).

Students can expect a comfortable bedroom with somewhere to study and shared bathroom facilities. They will often be sharing with other students and will travel by bus to the College. Laundry is done by the hosts once a week and any cleaning of the bedroom, including emptying bins etc. is done regularly. Towels and bedding are provided and are changed weekly.

Most importantly, students are encouraged to speak English at every opportunity within the family setting.



# Meals



## Homestay students

Most meals are taken with your host. From Monday - Friday students enjoy a hot lunch on campus. The host also provides a packed lunch for the weekend educational excursions.

## Residential students

Meals are taken in the dining hall and are buffet style. They comprise breakfast, lunch and an evening meal. There is a choice of food to cater for vegetarians, religious diets, etc. For educational excursions, a packed lunch is provided.

Here is a sample menu at Prior Park College:

	Day 1	Day 2	Day 3
<b>Breakfast</b>	Orange & Apple Juice		
	Smoked bacon, Boiled eggs, Baked beans, Grilled tomatoes	Butchers' sausages, scrambled eggs, Sauté potatoes, Spaghetti hoops	Fried eggs, Grilled tomato, baked beans, hash browns
	Porridge Station, Cereal Bar, Yoghurt Station, Toast & Preserves, Whole fruits		
<b>Lunch</b>	Slow cooked beef & bean chilli Pulled jackfruit enchiladas Pasta & Sauce Crunchy corn, peas, Vegetable rice, Salsa, Soured cream, guacamole Apple Crumble	Spanish chicken Red pepper Spanish tortilla Pasta & Sauce Patatas bravas, Spanish rice, Garlic mushrooms Raspberry crumble slice	Spaghetti bolognese Mushroom risotto Pasta & Sauce Homemade rosemary focaccia Roasted broccoli with tomatoes & red onions Rocket & parmesan salad Dark chocolate brownie
	Fruit		
<b>Dinner</b>	Pulled ham carbonara Vegetable lasagne Roasted Mediterranean vegetables Garlic doughballs Warm panzanella salad Pasta & Sauce Chocolate chip cookies	Jerk chicken legs Sweet potato Stew Rice & peas Fried plantain Vegetable rundown Fried dumplings Pasta & Sauce Fruit jellies	Chunky pork cassoulet Posh beans on sourdough toast Mashed potato Savoy cabbage Garden peas Pasta & sauce Eton mess
	selection of freshly cut & whole fruits		

menu subject to change

# Medical Care & Wellbeing



There is a local GP a few minutes' drive away (Combe Down Surgery). Bath Royal United Hospital (RUH) with its Accident & Emergency department is 15 minutes' drive away.

There are local pharmacies nearby if students require medication. Students must hand all medication to their group leader or the Elac Welfare Officer who will then administer it when required.

A First Aid box is kept in the Elac office and basic kits are taken on all excursions. There are First Aiders on site and Elac also has Mental Health First Aiders in Head Office if needed.

# Safety & Security



Prior Park is an enclosed campus that has a gated entrance and exit. The gates are locked at night and there is a night porter available at night time, if required. The Elac Office can provide an area to store money or valuables securely. Each house has its own security code on the front door lock. These codes will be issued on arrival. Students must lock all windows on leaving their accommodation and follow security procedures explained on arrival.

When out and about, we will explain to students how they can keep themselves and their belongings safe.

Students in homestay travel to and from the College on private or public buses, which is unsupervised.

# What to bring



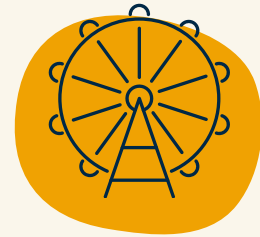
## Documents

- **Passport** and copy of it
- Visa document and copy of it (if required)
- Insurance document (including GHIC card if from EU)
- A copy of any medication prescriptions or certificates
- UK currency - both cash and pre-paid card



## Clothing Essentials

- Casual clothing
- Trainers
- Sports clothes
- Swimwear
- Towel (for swimming)
- Costume for disco/talent show
- Bag for dirty laundry
- Towel (if in residential accommodation)



## For Excursions

- Small backpack/handbag
- Comfortable clothes
- Shoes for walking
- Umbrella
- Waterproof jacket
- Sunglasses & sunscreen



## Toiletries & Medicines

- Toiletries, eg shampoo, soap, toothpaste
- Medicines, eg asthma inhaler, contact lens solution
- Please **DON'T** bring "disposable" toilet wipes



## Gadgets & Electronics

- Electronic devices (camera, mobile phone, ipad)
- Travel adaptor (UK 3 pin, 13A, 220V - 240V)
- Hair dryer



## Other required items

- Pencil case
- Pen & Pencil
- Notepad
- Water bottle
- Hand sanitizer
- Any props, costumes or items needed for the Cultural Exchange (Voyagers and Trailblazers)

**Please label all items, in case they get lost**

# General Information



## Student ages

- Residential: 11 - 17 years
- Homestay: 13 - 17 years



## Airport Arrivals

Groups and individuals will be met by an Elac representative at the airport.

Travel to the centre will be by private coach or taxi.

Approximate Transfer times: Gatwick (LGW) 2 hours 30 minutes, Heathrow (LHR) 2 hours  
Bristol (BRS) 45 minutes

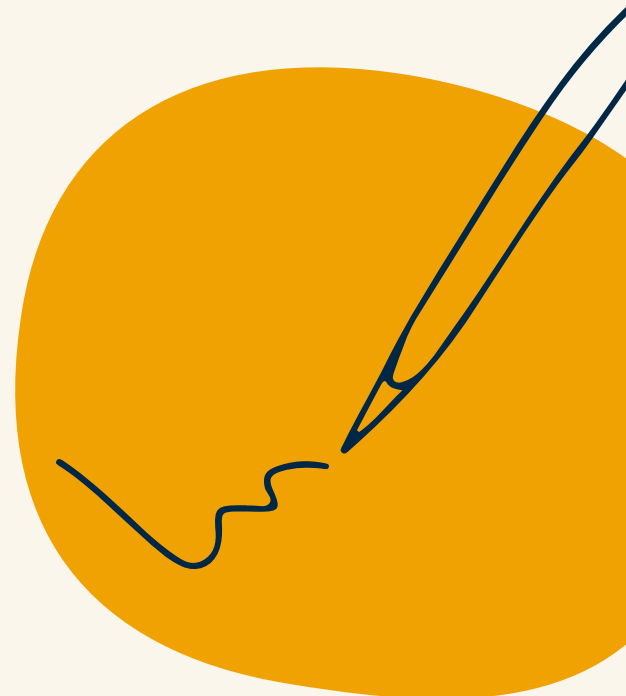
\*Individuals who have booked a shared transfer, may have to wait at the airport for up to 2 hours before being taken to the centre.

## Day #1 Welcome & Testing

On the first full day of the programme students will:

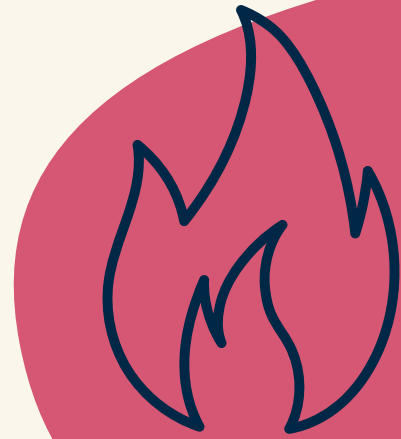
- have a welcome meeting with the Centre Manager,
- an orientation of the centre
- do an English language test (written and spoken)
- have a tour of the local town and some free time.

Students will receive an Elac lanyard with Emergency Contact Card



## Fire Safety

- Fire safety procedures on first day
- Practice fire drill for students.
- Fire signage throughout building
- Group leaders explain safety procedures to students in their own language.



## Mobile Phones

- All mobile phones must be put on silent and placed in the box provided at the front of the classroom at the start of every lesson.
- Mobile phones must not be used during activities unless required as part of the session.
- Staff may confiscate phones if rules are not followed.

## Noise

- Students must keep noise to a minimum when returning to their accommodation
- Curfew is 10pm.



## Damages & Replacements

- Fire alarm set off between 9.00 am and 5.30 pm: £75.00
- Fire alarm set off between 5.30 pm and 9.00 am: £100
- Replacing/refilling fire extinguishers: £100
- Replacement of lost fob/key: £100

The school imposes the above call-out charges for deliberate acts of misuse. Costs for other damages will be handled on a case-by-case basis.

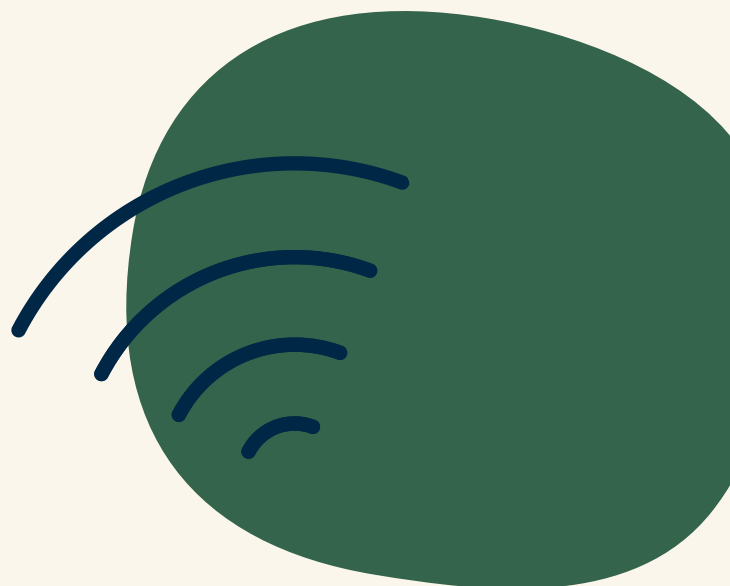


## Smoking, Drugs, Alcohol & Vaping

- It is illegal to smoke in any indoor public places - this includes vaping.
- There is no smoking allowed on the campus.
- No alcohol or drugs are permitted in any of our junior vacation courses regardless of age.

## Computer and WiFi Access

- Wifi available throughout the site
- Student access to computer room during activities.



## Shop

There is a small supermarket nearby.  
Water bottles can be refilled on site.



## Laundry, Cleaning & Bedding (residential accommodation)

- A laundry service is provided at a price of £2.70 per bag payable at the Elac office
- Bedrooms and bathrooms are cleaned daily (not weekends)
- Bed linen is provided and is washed once a week

## Bank & Post Office

- Selection of banks nearby (Bath town centre)
- Post Office in Bath.
- Alternatively, currency exchange can be done whilst on excursions.



## Hospital & Medical Care

Royal United Hospital, Combe Park,  
Bath, BA1 3NG, tel. 01225 428331  
Combe Down Surgery, The Avenue,  
Bath BA2 5EG, tel. 01225 832226



## Local Transport

- Private direct shuttle buses to/from Bath centre.
- Direct trains to London from Bath Spa train station (1 hour 30 minutes),
- Taxis can be organised by the Elac management team.

## Quiet/Multi Faith Room

- All students and Group Leaders can have access to a quiet room for religious observance.
- Please speak to the Elac management team for more information.



## Places of Worship

- St Michael's Church (Anglican), Broad Street, Bath, tel. 01225 447103
- St Johns Church (Catholic), South Parade, Bath, tel. 01225 464471
- Bath Islamic Society (Muslim) 8 Pierrepont Street, Bath, tel. 01225 460922
- Bristol Progressive Jewish Congregation, 43/47 Bannerman Road, Bristol, tel. 0117 9541937

# Useful information

## Contact Numbers

- Elac Prior Park Office: 07579831426
- Police, Fire, Ambulance: 999 (emergencies only)
- Police – non emergencies: 101
- Elac Head Office (Bath): +44 1225 443261

## School Address

Elac Study Vacations, c/o Prior Park College, Ralph Allen Drive,  
Bath, BA2 5AH

If sending post, please ensure the letter/package is clearly  
labelled with the student's name and group.

## Head Office

22 Milsom Street,  
Bath  
BA1 1DE, UK

If you have any queries about this course, please get in touch with our head office.  
Further information and photos can be found on our website ([www.elac.co.uk](http://www.elac.co.uk)).  
We hope you enjoy your course in Bath.

**elac.co.uk**

**+44 1225 443261**

**info@elac.co.uk**

