

PRIOR PARK COLLEGE CENTRE GUIDE



Elac
STUDY VACATIONS

HEAD OFFICE

22 Milsom Street,
Bath
BA1 1DE, UK

SOCIAL MEDIA

If you upload photos, don't
forget to tag us! Follow us
@elacsv



CONTACT US

+44 1225 443261
info@elac.co.uk
www.elac.co.uk

Accredited by the
BRITISH COUNCIL
for the teaching
of English in the UK

MEMBER
ENGLISH UK

YOUNG
LEARNERS
ENGLISH UK

A background image of a classical building with tall, fluted columns and a series of black, bowl-shaped fountains mounted on brackets. The scene is reflected in a pool of water in the foreground.

CONTENTS

2

ELAC INTRODUCTION

Introduction to Prior Park College, Elac and our mission statement

3-4

LOCATION, ACCOMMODATION & WELFARE

Information on the location, a site plan of EBC, and information on welfare, safeguarding, security and wellbeing.

5-8

THE ELAC EXPERIENCE - OUR PROGRAMMES

Includes information on our Voyagers (11-14) and Trailblazers (14-17) programmes

9

MEALS

10-12

EDUCATIONAL EXCURSIONS

Take a look at the places our students visit at this centre

13-17

GROUP LEADER, HOMESTAY AND GENERAL INFORMATION

Some useful information and a list of what you need to bring with you

PRIOR PARK COLLEGE CENTRE GUIDE

The city of Bath, a World Heritage Site, is one of the most fascinating cities in England. The city, which developed around its hot spring waters, is a remarkable blend of Roman, medieval and Georgian architecture, combined with a thriving shopping centre and excellent leisure facilities.

Bath offers one of the finest examples of a Roman Spa in Britain. It has some excellent shopping with small independents alongside larger stores. There are superb restaurants, cafes and coffee shops to spend some time in. Bath attracts excellent street entertainment as well as having two local cinemas, several theatres and many museums. The nearby leisure centre offers bowling, roller blading, swimming, trampolining and golf.

Bath's location is close to many great places of interest such as Bristol, Oxford, Stonehenge and Glastonbury. Bath also benefits from the fast train service to London every half hour.

Our course takes place at Prior Park College, an impressive independent school with amazing views overlooking Bath. The building was originally built in the Palladian style for Ralph Allen, a wealthy businessman who wanted to demonstrate the beauty of Bath stone. Set in 57 acres of parkland, the grounds provide a wealth of sports facilities including tennis courts, Astroturf pitches and football pitches.



Playing Fields at Prior Park

ELAC STUDY VACATIONS

Elac Study Vacations was formed in 1991 with one centre in Eastbourne. We now have multiple summer centres and one year round-centre in Bath, which is also our head office.

We currently welcome over 4,000 students from all over the world to our courses. Despite this growth, we still retain the values and ethos that characterized Elac from the beginning: to run quality courses that are attractive to staff, students and partners and where the welfare of all is our main priority.

MISSION STATEMENT

Our goal is to be an independent, ethical and environmentally-aware organisation dedicated to the teaching of English, and more generally to the nurturing of positive values in young people in an international setting. To achieve this goal, we aim to provide a secure, welcoming, inclusive and fun environment where students can feel at ease with each other and our staff, whilst on a course which they find both stimulating and challenging.

We believe that this will provide the platform we need to deliver the following outcomes for our students:

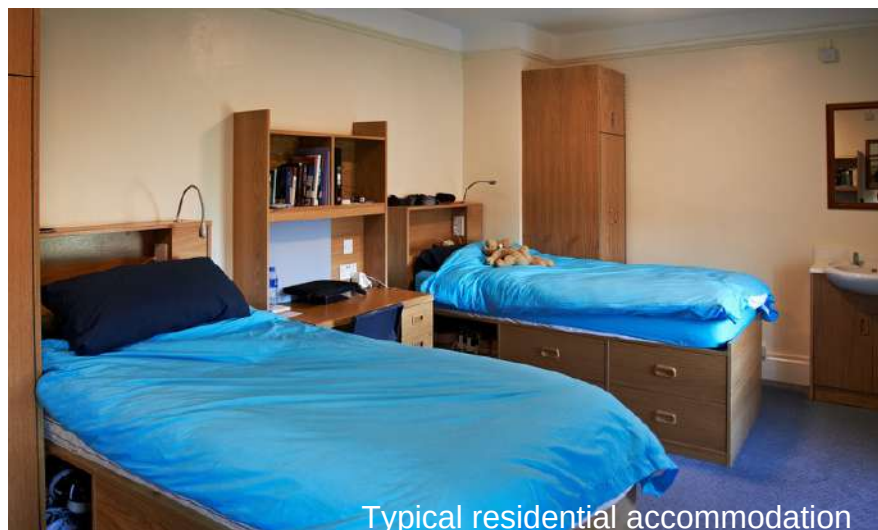
- A development of their language skills & confidence
- A deepening of their knowledge & understanding of British life & culture
- A broadening of their outlook on the world & awareness of other perspectives
- New, wide-ranging & long-lasting friendships that cross cultures

HOMESTAY ACCOMMODATION

Elac hosts are chosen with great care by our Homestay co-ordinators, who visit every home to get to know them and to inspect the accommodation provided. It is essential that all our hosts provide a warm welcoming atmosphere for our students where they can really feel at home. Homestay providers also have to comply with British Council standards, and have a current DBS Certificate (Disclosure and Barring Service).

Students can expect a comfortable bedroom with somewhere to study and shared bathroom facilities. Breakfast and an evening meal are served daily, and a packed lunch is provided for excursions. Most importantly, students are encouraged to speak English at every opportunity within the home.

Students travel to and from the College on private or public buses, which is unsupervised.



Typical residential accommodation

WELLBEING AND MEDICAL CARE

The physical and mental health of our students and staff is a priority and we encourage students to talk to us if they are experiencing any problems. We keep a record of all student's medical conditions and requirements, so all staff are aware of specific conditions, e.g. food allergies.

If a student becomes unwell, we will arrange to take them to a local GP. The Royal United Hospital has an A and E department as well as general wards. Local pharmacies can also help with minor ailments.

A First Aid box is kept in the Elac office and basic kits are taken on all excursions. The ELAC team have numerous First Aiders. They will be available throughout the day. Any injuries/accidents should always be reported to the Elac Office.

RESIDENTIAL ACCOMMODATION

Residential accommodation is in two main buildings, in shared or single rooms. Most rooms have shared bathroom facilities. There may be an area where students can gather to socialise in the evenings.

SAFEGUARDING/ WELFARE

All our staff are employed using safer recruitment methods and receive training regarding student welfare and child protection and are aware of the Elac safeguarding policy. If they notice a student is experiencing any problems, they will liaise with the Welfare Officer and Group Leader, who can then investigate and take the appropriate action. This is referred to head office and the Designated Safeguarding Lead if necessary.

We also have a legal duty to identify and safeguard children who may be vulnerable to radicalization (the Prevent duty).

We maintain a good supervision ratio of staff to students, both during activities on-site and educational excursions off-site.

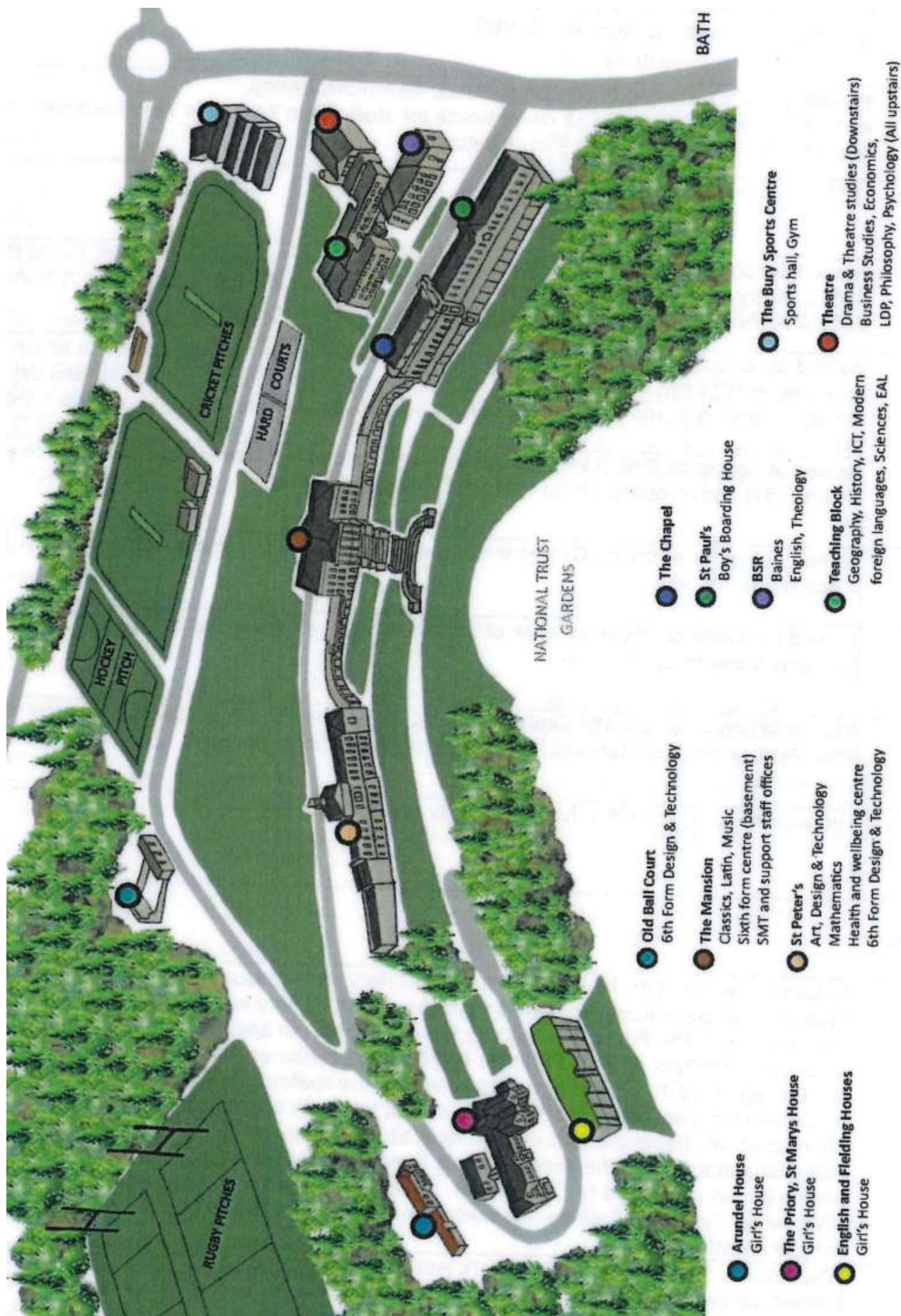
All Elac staff, group leaders and students sign a code of conduct which indicates the kind of behaviour we wish to promote. It clearly sets out the process for dealing with unacceptable behaviour. Information can be downloaded from the following link -

<http://elac.co.uk/downloadable-information/>

There are three roll calls daily: at the start of lessons, at the start of activities, and in the accommodation in the evening.

Curfew times are communicated and we expect students and group leaders to respect these.

SITE MAP



THE ELAC EXPERIENCE

We aim to deliver a rich and varied experience: a blend of language learning, cultural highlights, personal development and fun. Each centre has its own particular style, but there are common features and a shared ethos across all our centres.

The combination of lessons and projects, activities, social events and educational excursions makes up the Elac Experience, led by a committed team of staff, many of whom have chosen to work for Elac summer after summer.

All students on our two or three-week Summer programmes, **Voyagers (11-14)** and **Trailblazers (14-17)**, will experience their own unique Elac journeys. Here are some aspects of our programmes which are the same for everyone.



Welcome:

- Meet and Greet
- Private coach/taxi transfer to your centre
- Welcome meeting & course orientation

Lessons:

- English level test
- Communication language skills & functional English
- 1:16 teacher/student ratio
- Lessons linked to Educational excursions

Creative & Physical Activities:

- Physical activities e.g. swimming, games, sports
- Creative activities e.g. drama, design, art & craft
- Workshops; Music & Rhythm, Circus Skills, Exploring Creativity etc.
- Evening entertainment programme, e.g. Discos, Talent Shows, Quizzes & Sports Tournaments

Educational Excursions:

- 2 half day local excursions (*3 for 3-week students)
- 3 full day excursions (*4 for 3-week students)
- 1 optional excursion (*2 for 3-week students) **supplements apply
- Entrances and/or tours included

Farewell:

- Private coach/taxi transfer to your departure airport
- End of course certificate

TRINITY EXAMINATION

Students have the option to be prepared and entered for the Trinity GESE at the appropriate level. This takes place during three additional sessions organised in the afternoons or evenings prior to the exam.

There is an additional charge for entering the exam (please see our website).

The exam is offered at 12 Grades.

These are as follows:

Initial Stage:	Grade 1 - 3
Elementary Stage:	Grade 4 - 6
Intermediate:	Grade 7 - 9
Advanced:	Grade 10 - 12

It is envisaged that the majority of our students will be entered across grades 3 - 8.

TEACHERS

We require our teachers to have a degree plus a TEFL certificate, for example, CELTA or Trinity Cert. TESOL.

Teachers are supervised by an Academic Manager who provides academic support and ensures the programme is delivered to the highest possible standard. We also pride ourselves in our teacher development programme of workshops and lesson observations provided throughout the summer.

VOYAGERS

AGES: 11-14

Increasing confidence and developing creativity and collaborative skills are key to young teenagers' language progress. Our Voyagers programme aims to develop these soft skills and build on students' English competency through fun interactive activities, so they capitalise on the international summer environment and are motivated to advance on their journey to becoming confident English users.

WELCOME & TESTING

LEVEL TEST, CAMPUS TOUR & WELCOME

ENGLISH COMMUNICATION SKILLS

- LESSONS LINKED TO EDUCATIONAL VISITS
- COMMUNICATIVE LANGUAGE SKILLS & FUNCTIONAL ENGLISH



21ST CENTURY SKILLS

- INTRODUCTION TO 21ST CENTURY SKILLS
- CREATIVE PROJECTS
- FUNCTIONAL ENGLISH
- GROUP WORK
- ROLE PLAY & PRESENTATIONS



GLOBAL CITIZENSHIP

- CULTURAL EXCHANGE
- GLOBAL ENVIRONMENTAL AWARENESS PROJECTS
- STEM CHALLENGES



SUMMER WORKSHOPS

- MUSIC & RHYTHM
- CIRCUS SKILLS
- PHOTOGRAPHY & DIGITAL MEDIA CHALLENGES
- EXPLORING CREATIVITY
- TEAM BUILDING



PHYSICAL & CREATIVE ACTIVITIES

- FOOTBALL, BASKETBALL, SWIMMING, VOLLEYBALL, DODGEBALL...
- CREATIVE & CHALLENGING ARTS SESSIONS (T-SHIRT DESIGNING, DRAMA, ART & CRAFTS)...



EVENING ENTERTAINMENT PROGRAMME

- DISCOS
- TALENT SHOW
- QUIZZES
- MOVIE NIGHTS
- CASINO NIGHT
- SPORTS TOURNAMENTS
- MINI OLYMPICS
- MURDER MYSTERY
- CHILL OUT LOUNGE



EDUCATIONAL EXCURSIONS

- FULL-DAY TO BATH INC VISIT TO ROMAN BATHS
- FULL-DAY TO LONDON INC. GUIDED TOUR & MUSEUM VISIT
- FULL DAY TO BRISTOL
- HALF DAY TO BATH INC LEISURE CENTRE
- 3 WEEK STUDENTS**
- FULL-DAY TO OXFORD INC. WALKING TOUR AND ENTRANCE TO A COLLEGE
- HALF-DAY TO BATH INC. MUSEUM VISIT

OPTIONAL EXCURSIONS

A CHOICE OF CULTURAL, EDUCATIONAL AND FUN DESTINATIONS TO VISIT *(SUPPLEMENTS APPLY) TO SEE BOOKLET [CLICK HERE](#)



TRAILBLAZERS

AGES: 14-17

Developing 21st Century Skills and gaining a global perspective on topical issues are key to success in academic and professional life. Our Trailblazers programme aims to equip older teenagers with these higher skills, so they are challenged to use English in a stimulating way and are championed on their journey to become confident and successful young adults.

WELCOME & TESTING

LEVEL TEST, CAMPUS TOUR & WELCOME

ENGLISH COMMUNICATION SKILLS

- LESSONS LINKED TO EDUCATIONAL VISITS
- COMMUNICATIVE LANGUAGE SKILLS & FUNCTIONAL ENGLISH



21ST CENTURY SKILLS

- 21ST CENTURY SKILL DEVELOPMENT
- BUSINESS INNOVATION
- CRITICAL THINKING
- PUBLIC SPEAKING
- LEADERSHIP



GLOBAL CITIZENSHIP

- MODEL UNITED NATIONS
- GLOBAL ENVIRONMENTAL AWARENESS PROJECTS
- STEM CHALLENGES



SUMMER WORKSHOPS

- MUSIC & RHYTHM
- CIRCUS SKILLS
- PHOTOGRAPHY & DIGITAL MEDIA CHALLENGES
- EXPLORING CREATIVITY
- TEAM BUILDING



PHYSICAL & CREATIVE ACTIVITIES

- FOOTBALL, BASKETBALL, SWIMMING, VOLLEYBALL, DODGEBALL...
- CREATIVE & CHALLENGING ARTS SESSIONS (T-SHIRT DESIGNING, DRAMA, ART & CRAFTS)...



EVENING ENTERTAINMENT PROGRAMME

- DISCOS
- TALENT SHOW
- QUIZZES
- MOVIE NIGHTS
- CASINO NIGHT
- SPORTS TOURNAMENTS
- MINI OLYMPICS
- MURDER MYSTERY
- CHILL OUT LOUNGE



EDUCATIONAL EXCURSIONS

- FULL-DAY TO BATH INC VISIT TO ROMAN BATHS
- FULL-DAY TO LONDON INC. GUIDED TOUR & MUSEUM VISIT
- FULL DAY TO BRISTOL
- HALF DAY TO BATH INC LEISURE CENTRE
- **3 WEEK STUDENTS**
- FULL-DAY TO OXFORD INC. WALKING TOUR AND ENTRANCE TO A COLLEGE
- HALF-DAY TO BATH INC. MUSEUM VISIT



OPTIONAL EXCURSIONS

A CHOICE OF CULTURAL, EDUCATIONAL AND FUN DESTINATIONS TO VISIT *(SUPPLEMENTS APPLY) TO SEE BOOKLET [CLICK HERE](#)



MEALS

Homestay students

Most meals are taken with the homestay provider. From Monday - Friday students enjoy a hot lunch on campus. The homestay provider also provides a packed lunch for the weekend excursions. Students will stay on campus for 2-3 dinners a week so they can take part in the evening activities.

Residential students

Students have breakfast, lunch and dinner at the dining hall. On excursion days students will be issued with a packed lunch or a food voucher to use in shops or restaurants. A packed lunch from the school will comprise of: sandwich, crisps, fruit, cake/chocolate bar, mineral water/drink, or similar. On our return in the evening, a late dinner will be taken in the school dining hall.



BREAKFAST 7.30 – 8.30

This is a continental breakfast with a full English breakfast served on the weekend.



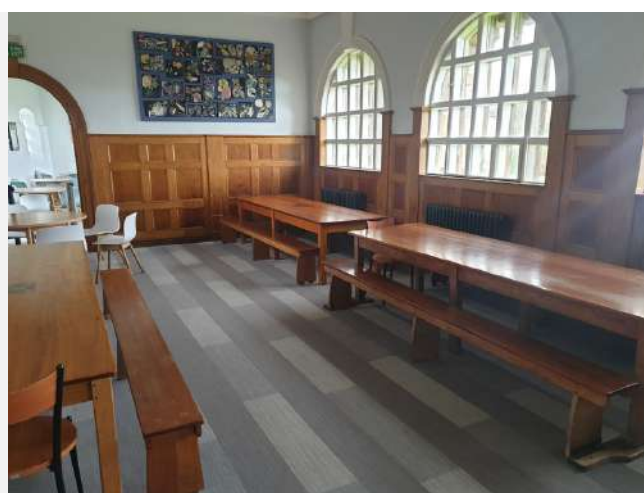
LUNCH 12.15-13:30

There are several choices of menu which always include vegetarian dishes as well as a selection of hot and cold dishes.



DINNER 17:30 - 19:30

Again there are several choices of menu which always include vegetarian dishes as well as a selection of hot and cold dishes. Students are not restricted to one serving.



EDUCATIONAL VISITS

These are a very popular part of our course, and give students an opportunity to use their English as well as learn more about Great Britain. Students have the opportunity to learn more about the trip during lessons. Students travel by coach or train to these destinations. Activity leaders will brief students to follow certain rules for their own safety. On our return, a late dinner will be served.



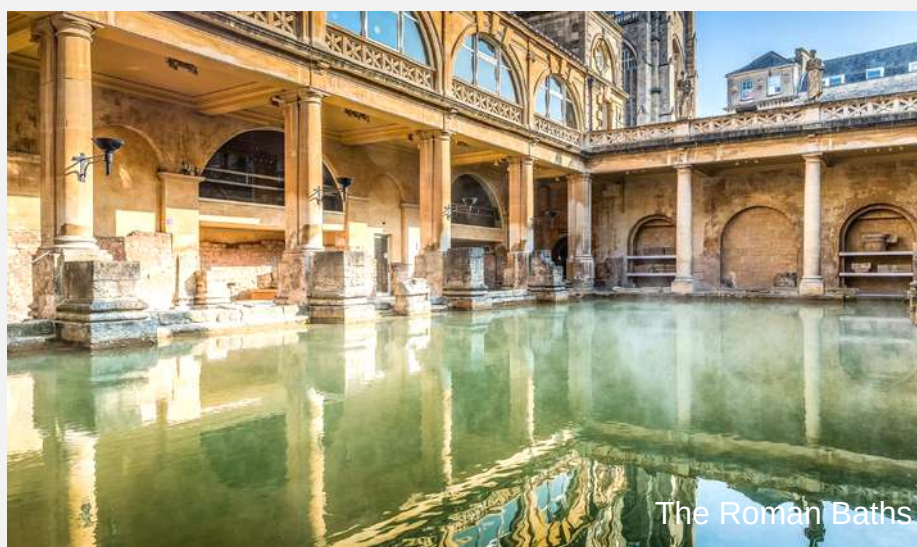
The Houses of Parliament, London

LONDON FULL DAY

Our educational visit to London begins with a walking tour of the city – the best way to see all the world-famous landmarks. These include Buckingham Palace, The Houses of Parliament, Westminster Abbey, Trafalgar Square and much more. At the end of the sightseeing tour, you will have some free time in Oxford Street (or another location your group has chosen) to shop and buy souvenirs.

If you want to do something different with your afternoon, here are some alternative activities we can help you arrange: Natural History Museum, Science Museum, Covent Garden, British Museum, National Gallery, Camden Market, London Eye*, London Aquarium*, The Shard*, Shakespeare's Globe Theatre.

*These venues have entrance fees so there will be an additional cost: please talk to the activity manager for more details.



The Roman Baths

BATH FULL DAY

Bath is a fascinating city and there are many places to explore. Our visit includes a tour of the famous Roman Baths, with an audio guide available in different languages.

There is a chance to take in more sights and time to visit some of the many shops in the city.

BRISTOL FULL DAY



Bristol is the eighth largest city in the UK with a population of just under half a million people. It is a bustling city with a vibrant music scene and is home to the street artist Banksy.

The city has an interesting seafaring heritage, and much of the dock area has been redeveloped as a leisure area with many cafes and restaurant and public spaces.

Our visit to Bristol begins with a chance to view and walk across the Clifton Suspension Bridge, built by the renowned engineer Isambard Kingdom Brunel. There will be free time to visit Cabot Circus, a large shopping mall, or follow the 'Banksy trail'

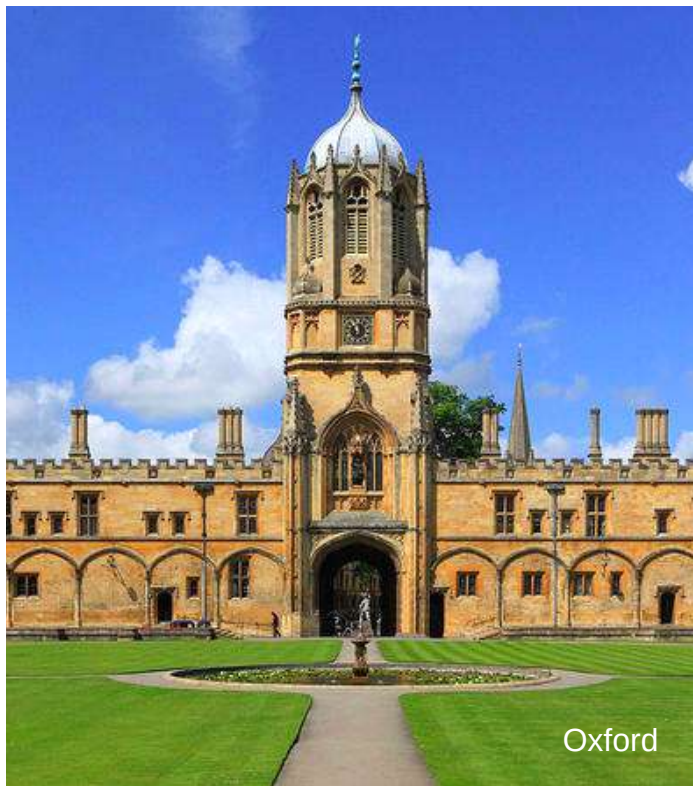


BATH HALF-DAY

Students take part in a walking tour, taking in the main sites, like Bath Abbey, Pulteney Bridge, and the Royal Crescent.

They will be transported by private coach and will be brought back to the campus for lunch/dinner.

3 WEEK PROGRAMME EDUCATIONAL VISITS



Oxford

OXFORD FULL DAY

Oxford is a city with a long history, much of it surrounding the university: together with Cambridge they are among the oldest and best known universities in Europe. Oxford University is made up of a number of independent colleges, and these are scattered throughout the city centre.

The visit consists of a walking tour with our activity leader, taking in most of the famous sites, and there is also the opportunity to visit one of the colleges, so that you can get a feel of what it is like to study there. Visits to some of the excellent museums can also be organized (*additional cost).

There will also be time for some shopping, or you may want to organize rowing or punting on the River Isis (* additional cost).



Jane Austen Museum

BATH HALF-DAY

Students return to Bath to visit the Jane Austen Centre - which offers you a snapshot of life during Regency times and explores how living in this magnificent city affected Jane Austen and her writing.

They will be transported by private coach and will be brought back to the campus for lunch/dinner.

OPTIONAL EDUCATIONAL EXCURSIONS

As well as included educational excursions, there are also opportunities to go on optional excursions. In a two week programme there is one optional excursion day, and in a three week programme there are two. These can be found in the booklet, "Optional Educational Excursions", which gives suggested itineraries and costs. If you would like to supplement your programme, please speak to the Head office, or the Activity Manager on arrival.

Popular Optional Excursions from Bath include:

- Stonehenge and Salisbury
- Stratford-upon-Avon
- Cardiff
- Further excursions to London and Bristol

Stonehenge

Stonehenge is a prehistoric monument located in Wiltshire, 8 miles north of Salisbury. One of the most famous sites in the world, Stonehenge is the remains of a ring of standing stones, which archaeologists believe was constructed from 3000 BC to 2000 BC. The site and its surroundings were added to the UNESCO's list of World Heritage Sites. A visit to Stonehenge includes a guided tour of the site.



Salisbury Cathedral

Salisbury is a cathedral city in Wiltshire, with a beautiful cathedral, historic town centre and good selection of shops. Known as 'the city in the countryside', Salisbury is surrounded by a quintessentially English landscape. Within the Chapter House at Salisbury Cathedral you'll find the best preserved of the four original Magna Carta manuscripts dating from 1215AD. With timbered buildings, an Early English Gothic Cathedral home to the famous Magna Carta, a thriving market, a buzzing arts scene, museums and some of England's finest historic houses there are many things for you waiting to be explored.



Salisbury Cathedral

GROUP LEADERS

Working closely with Group Leaders is essential, as they know their students, their culture and their language. This happens through regular meetings when information is shared and issues can be raised.

Prior to the Welcome Meeting on the first day of the course, where the Elac Management Team share information with Group Leaders regarding all aspects of the course, Group Leaders will be given a Welcome Pack complete with information for helping both students and Group Leaders settle into the programme.

We also want Group Leaders to enjoy their time with Elac and have an opportunity to meet other leaders. Events are organized, such as visits to places of local interest, teacher development sessions, cream teas, or a cheese and wine evening

Elac has a dedicated office and its location will be given out when students arrive. There is also a Group Leaders room on-site where Group Leaders can relax and have access to tea and coffee.



Group Leaders enjoying a cream tea

USEFUL TELEPHONE NUMBERS

- **Prior Park 24 hour emergency: TBC**
- **Bath Hospital (RUH): +44 1225 428331**
- **Police, Fire, Ambulance - 999 (emergencies only)**
- **Police – non emergencies +44 845 6070999**
- **Elac Head Office (Bath): 01225 443261**

CENTRE ADDRESS

Elac Study Vacations,
Prior Park College, Ralph
Allen Drive, BA2 5AH

If sending post, please ensure the letter/package is clearly labelled with the student's name and group.

SECURITY

The UK is seen as a safe place to visit and Bath is a safe location. However, we still advise students to lock all windows and doors on leaving their homestay provider's home or accommodation building and follow security procedures explained by their homestay provider or Group Leader on arrival.

ADVICE FOR A HAPPY STAY WITH A HOST

Your host is looking forward to your visit, and wants to give you an enjoyable experience. Here are some useful things to remember, that will help you have an enjoyable stay as well.

Every home has its own rules and some of your host's rules may be different to yours. If you don't understand anything, please ask! Your host will be happy to explain anything to you. It may be the practice in the home for the children to help out with jobs, like clearing the table. It is good if you can take part in this way too; however, if you have concerns over what you are being asked to do, then don't be afraid to speak with your Group Leader or the Centre Manager.

You may feel homesick. This is normal. If you do feel homesick or anxious, talk to your host or your Group Leader. If you are feeling ill, let your host know. They can arrange for you to visit a local doctor, or to stay at home for a while.

Please treat your host with respect, showing politeness and letting them know what your plans are, eg. if you are going to be late back one evening and don't require a meal. It is a good idea to exchange mobile telephone numbers, and remember to keep it charged! If you do come back late, please remember to be quiet as some family members may be asleep. Please keep to your curfew times.

At mealtimes, you will be expected to try different food. This is part of the experience of staying with a host. If there is anything you cannot eat, or if you would like some more food, please explain this to the host.

Please look after your valuables and don't leave money around – it is best to give them to the Group Leader to look after, rather than leave them in your room.

It is important to remember that all hosts and their homes are different. Some have bigger houses than others. Some have tidier homes. Some have modern furniture and technology and others have more basic homes. However, they are all kind, friendly and hospitable hosts who will aim to make you feel welcome.

Please spend as much time with them as you can. Be proactive and ask them questions! Get to know them! You will learn English customs and your English will improve! Hopefully you will make some very good English friends too.

HOMESTAY FACILITIES

When using the bathroom, remember that other people will also want to use it, so don't waste hot water, and don't flush anything unsuitable down the toilet.

Try to keep your room tidy: put litter in the bin, make your bed, put your clothes away. Please don't eat food in the bedroom, smoke, or light candles. Be careful with nail varnish, nail glue and hair dye, and don't leave hair straighteners on, or rest them on furniture. Also, don't jump on the beds! Treat it like your own.

Your host will do your laundry for you once a week, so ask them when this will happen, and where to put your clothes.

Some hosts will give you a key. It is very important that you look after this, and remember to return it at the end of your stay. Also, please check you have all your belongings with you when you leave.

Please also treat your host's property with respect, and let them know if something gets damaged. You may be asked to pay for any repairs or replacements. Remember to ask permission to use the telephone, computer, etc. Also ask their permission if you want to video or photograph the house for your parents.

WHAT STUDENTS NEED TO BRING



DOCUMENTS

- **Passport** and copy of it
- Visa document and copy of it (if required)
- A copy of any medication prescriptions or certificates
- UK currency



CLOTHING ESSENTIALS

- Casual clothing
- Trainers
- Sports clothes
- Swimwear
- Swim towel
- Something smart
- Costume for disco/talent show
- Bag for dirty laundry



FOR EXCURSIONS

- Small backpack/handbag
- Comfortable clothes
- Shoes for walking
- Umbrella
- Waterproof jacket
- Sunglasses & sunscreen



TOILETRIES AND MEDICINES

- Toiletries, eg shampoo, soap, toothpaste,
- Medicines, eg asthma inhaler, contact lens solution
- Towel



GADGETS AND ELECTRONICS

- Electronic devices (camera, mobile phone, ipad)
- Travel adaptor (UK 3 pin, 13A, 220V - 240V)



OTHER USEFUL ITEMS

- Pencil case
- Pen & Pencil
- Notepad
- Water bottle
- Tissues
- Hand sanitizer

PLEASE LABEL ALL ITEMS, IN CASE THEY GET LOST

GENERAL INFORMATION



STUDENT AGES & NATIONALITIES

- 11 - 17 years
- Italian
- Spanish
- French
- Austrian
- Greek
- Russian
- Japanese
- Chinese
- Israeli

Please note - the above nationalities are popular examples. We host various nationalities throughout our centres.



AIRPORT ARRIVALS

- Group will be met by an Elac representative.
- Travel to centre by private coach.
- On arrival Elac staff show group to their accommodation.
- Transfer time - **Gatwick** (LGW) 2 hours 30 minutes, **Heathrow** (LHR) 2 hours, **Bristol** 45 minutes.



REGISTRATION & INTRODUCTION

Students will have a welcome talk and a tour of the site. Students will receive the following items:

- Student notepad
- Lanyard/wristband
- Course programme
- Emergency Contact Card

Students are registered prior to or after their assessment test.



FIRE SAFETY

- Fire safety procedures on first day
- Practice fire drill for students.
- Fire signage throughout building
- Group leaders explain safety procedures to students in their own language.



MOBILE PHONES

- All mobile phones must be switched off during lesson times.
- Teacher may confiscate phone if rules are not followed.



NOISE

- Students must keep noise to a minimum when returning to their accommodation
- Curfew is 10pm.
- Lights out by 11pm.



DEPOSITS

- Group Leaders asked to hold a deposit of £25 per student in case of damages.
- Group Leader to investigate and pay for any damages caused.
- Individuals should pay the deposit to the Welfare Officer.
- Replacement of lost fob/key is £20 (Campus), £100 (Homestay)



DAMAGES

- Fire alarm set off between 9.00 and 5.30 pm: £75.00
- Fire alarm set off between 5.30 pm and 9.00 am: £100
- Replacing/refilling fire extinguishers: £100

The school imposes the above call out charges for deliberate acts of misuse.



SMOKING, DRUGS & ALCOHOL

- It is illegal to smoke in any indoor public places - this includes vaping.
- There is no smoking allowed on Prior Park campus, except for the designated areas clearly labeled.
- No alcohol or drugs are permitted in any of our junior vacation courses **regardless of age.**



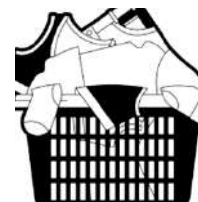
COMPUTER AND WIFI ACCESS

- Wifi available throughout the campus
- There are charging locations all throughout the buildings on campus



SHOP

- There is a corner shop 400m from Prior Park.



LAUNDRY

- Laundry available on site
- Netted bag per student, once a week service if required (small fee)



BANK & POST OFFICE

- Post Office and Banks in Bath centre
- Currency exchange can be done whilst on excursions or in Bath centre.



HOSPITAL & MEDICAL CENTRE

Royal United Hospital (RUH)
Combe Park, Bath, Avon BA1 3NG, tel 01225 428331
Widcombe Surgery (Walk in service) 3-4 Widcombe Parade, Widcombe, Bath BA2 4JT, tel 01225 310883



LOCAL TRANSPORT

- Private direct shuttle buses to/from Bath Centre.
- Direct trains to London from Bath Spa train station (1 hr 30 min)
- Taxis can be organized through the Elac Management team.



QUIET/MULTI-FAITH ROOM

- All students and Group Leaders can have access to a quiet room for religious observance.
- Please speak to the Elac management team for more information.



PLACES OF WORSHIP

- St Michael's Church (Christian) Broad Street, Bath tel. 01225 447103
- St Johns Church (Catholic) South Parade, Bath tel. 01225 464471
- Bath Islamic Society (Muslim) 8 Pierrpoint Street, Bath tel. 01225 460922
- Bristol Progressive Jewish Congregation (Jewish) 43/47 Bannerman Road, Bristol tel. 0117 9541937

FINAL COMMENTS

If you have any queries about this course, please get in touch with our head office. Further information and photos can be found on our website (www.elac.co.uk). We hope you enjoy your course at Prior Park College